

Nabors Integra™ MPD-Ready Express Rig with Advanced Drilling Automation Delivers a Record “Big-hole” (8.5 inches OD) Three-mile Production Lateral Section in the Delaware Basin

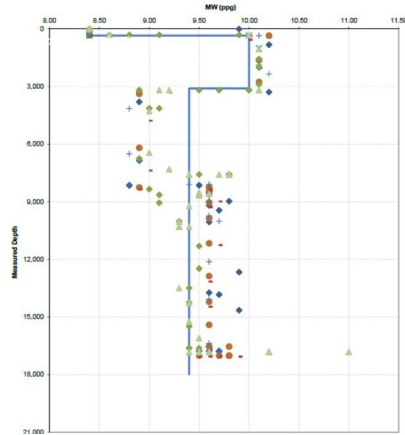


CHALLENGE/ OVERVIEW

- Potential loss zones in Brushy Canyon as shown in Fig. #1
- Need higher MWs towards end of lateral as seen on offset wells. Fig. #1
- Mitigate ballooning and wellbore stability issues.

SOLUTION

- Minimize MW through loss zones via drilling. Fig.#2
- Implement Managed Pressure Drilling for constant bottom hole pressure
- Utilize Integra™ MPD system for EMW control and influx mitigation
- Address ballooning and ensure wellbore stability



MAINTAINING MAX. EMW 10.17 PPG @ BRUSHY CANYON STATICALLY ON CONNECTIONS

MPD-Ready® SBP schedule

MD (ft)	IVD (ft)	Mod Weight (lb/foot)	SWP (ppg)	Dynamic SWP (ppg)	Dynamic CBHP (ppg)	Dynamic DMO (lb/foot)	Status SWP (ppg)	Static EMW (Brushy Canyon limit)	Static DMO (lb/foot)
3336	3336	9.50	1831	0	10.31	10.17	112	10.15	10.17
2615	2615	9.50	1978	0	10.28	10.17	221	10.15	10.23
4080	4076	9.50	2216	0	10.28	10.17	143	10.16	10.32
5010	4973	9.50	2677	0	10.20	10.13	180	10.16	10.54
8970	8967	9.50	3230	0	10.15	10.13	220	10.16	10.77
9800	9799	9.50	4620	0	10.13	10.12	296	10.16	10.98
10880	10877	9.50	4670	0	10.07	10.12	277	9.82	10.62
8790	8746	9.50	4570	0	10.05	10.15	277	9.82	10.62
9640	9575	9.50	4967	0	10.05	10.13	277	9.82	10.62
10390	10319	9.50	4890	0	10.07	10.15	277	9.82	10.62
11520	10719	9.50	4917	0	10.12	10.17	296	9.82	10.62
12450	10719	9.50	4942	0	10.18	10.17	299	9.82	10.62
13580	10318	9.50	4967	0	10.23	10.17	290	9.82	10.62
14310	10318	9.50	4993	0	10.28	10.15	231	9.82	10.82
15240	10318	9.50	5018	0	10.33	10.20	233	9.82	10.82
16170	10318	9.50	5044	0	10.38	10.28	236	9.82	10.82
17100	10318	9.50	5070	0	10.42	10.08	238	9.82	10.83
17122	10318	9.50	5070	0	10.45	10.12	238	9.82	10.83

RECENT SUCCESS

DELAWARE BASIN

BEST IN BASIN



17.7 Days

Fastest three-mile 8.5 in. production hole

Beat the previous record by 10 days



15.25 Hours

Fastest Curve

Beat the previous record by 4 hours

The result is reliable and consistent execution of drilling operations and well construction in challenging formations.

CONCLUSION

- 1 Set Delaware's best-in-basin 8.5-inch three-mile lateral record in 3rd Bone Spring Sand, surpassing the Operator's previous mark by 10 days
- 2 Beat Operator's curve drilling record by 4 hours, completing in just 15.25 hours with only 2-BHA
- 3 Achieved controlled Constant Bottom Hole Pressure (CBHP), enabling the installation of 27,400 ft. of 5.5" Casing in 19.75 hours.

Following these results, 8.5-inch three-mile production sections with three-string casing designs are regularly performed in the Delaware Basin.